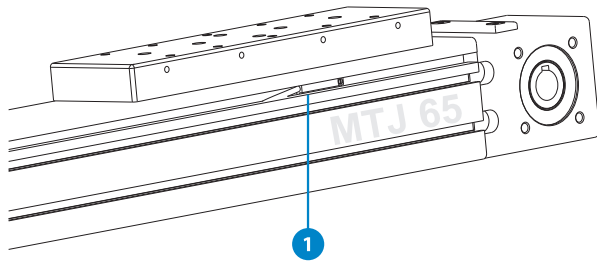
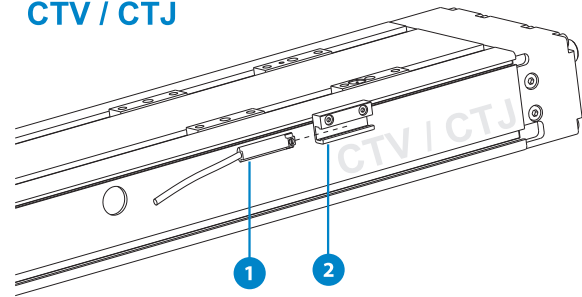


MAGNETIC FIELD SENSORS

MTJ / MRJ / MTV



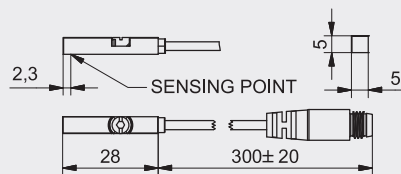
CTV / CTJ



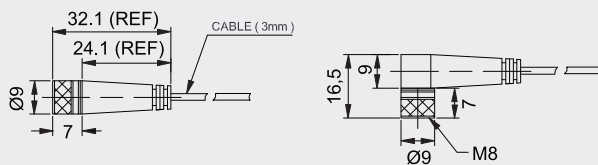
- 1 - Magnetic field sensor
- 2 - Sensor holder

i Mounting of Magnetic field sensor on **CTV** and **CTJ** series requires a HOM sensor holder. For CTV/CTJ 200 a HOM sensor holder is not needed.

SMT-65TP-K N0 / NC



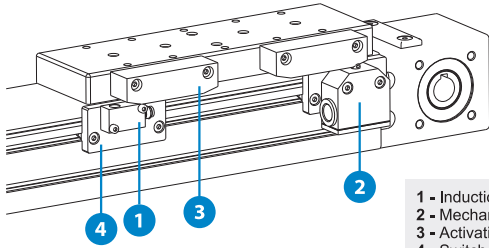
Extension cable with connector



Code	Type	Compatibility	
43851	HOM Sensor holder	CTV90, CTV110, CTV145, CTJ90, CTJ110, CTJ145	
74073	SMT-65TP-K NC	MTJ/MRJ/MTV/MTJZ:40,65,80,110 CTV/CTJ: 200	
77075	SMT-65TP-K NC + HOM	CTV90, CTV110, CTV145 CTJ90, CTJ110, CTJ145	
74074	SMT-65TP-K NO	MTJ/MRJ/MTV/MTJZ:40,65,80,110 CTV/CTJ: 200	
77076	SMT-65TP-K NO + HOM	CTV90, CTV110, CTV145 CTJ90, CTJ110, CTJ145	
8146	Extension Cable length 2m - Straight connector		
8147	Extension Cable length 5m - Straight connector		
9017	Extension Cable length 2m - Angeled connector		
9019	Extension Cable length 5m - Angeled connector		

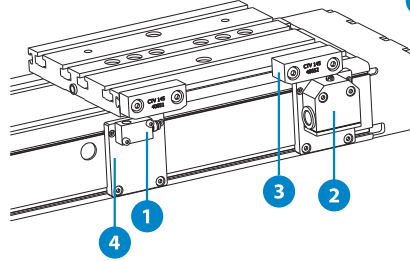
TECHNICAL DATA	SMT-65TP-K NC	SMT-65TP-K NO
Sensor Type	GMR sensor	GMR sensor
Switching function	NC	NO
Output	PNP	PNP
Operating voltage	10 ~ 28 V DC	10 ~ 28 V DC
Switching Current	200 mA max.	200 mA max.
Power rating	5,5 W max.	5,5 W max.
Voltage Drop	1,5 V / 200mA max.	1,5 V / 200 mA max.
Current Consumption	10 mA / 24 V max.	10 mA / 24 V max.
Switching Frequency	1000 Hz	1000 Hz
Ambient temperature	-10 ~ +70°C	-10 ~ +70°C
Shock/Vibration	50 G / 9 G	50 G / 9 G
Protection class	IP 67	IP 67
LED indicator	yellow	Yellow
Electrical connection	M8, 3-pin	M8, 3-pin
Cable material length	PU - 0,3 m	PU - 0,3 m
Extension cable	Energy chain compliant	Energy chain compliant

MTJ / MRJ / MTV



- 1 - Induction switch
- 2 - Mechanical switch
- 3 - Activation block
- 4 - Switch holder

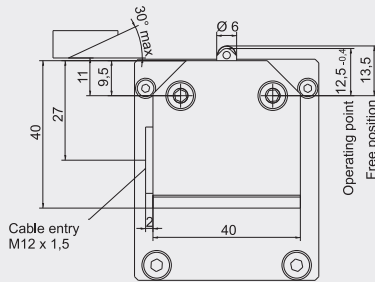
CTV / CTJ



i Mounting and using the Induction and Mechanical switch, can be done only if the CTV and CTJ series Linear Units are delivered with Connection plates.

MS- Mechanical switch

TECHNICAL DATA

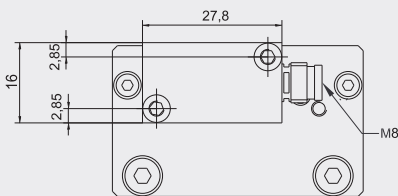


Protection class IEC 60529	IP 67
Ambient temperature	-5°C ...+80°C
Operating point accuracy	± 0.05 mm
Approach speed max.	45 m/min
Approach speed min.	0,01 m/min
Switching contact	1 changeover
Switching principle	Snap-action
Rated voltage	250 V AC
Switching current, min. at	10 mA
Switching voltage	24 V DC
Cable entry	M12 x 1,5

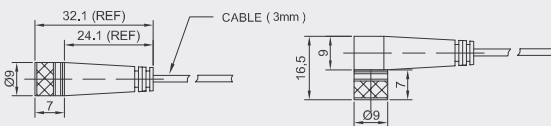
ORDERING CODES	MTJ/MR/J 40	MTJZ 40	MTJ/MR/J/MTV 65 MTJZ 65/80	MTJ/MR/J/MTV 80	MTJ/MR/J/MTV 110	MTJZ 110	MTJ ECO 40	CTV/CTJ 90	CTV/CTJ 110	CTV/CTJ 145	CTV/CTJ 200
+ 2x Activation block with fixing screws	43243	52022	43247	43256	47827	63702	49030	49032	49031	40652	40652
Mechanical switch only	47921										
2x + 2x Mechanical switch with mounting elements	40683		40687	40689	47826	63703	49035	49034	49033	47939	53055

IS- Inductive switch

TECHNICAL DATA



Extension cable with connector



Sensor Type	PNP
Switching function	NC / NO
Rated voltage	10 ~ 30 V DC
Switching Current	150 mA max.
Ambient temperature	-25°C ...+70°C
Switching Frequency	800 Hz max.
Voltage Drop	3,5 V
Protection class	IP 67
Electrical connection	M8, 3-pin
Extension cable	Energy chain compliant - bending radius 75 mm
Cable material-length	PU
Cable length	2m / 5m
Cable length	M8, 3-pin Straight or Angeled connector

ORDERING CODES	MTJ/MR/J 40	MTJZ 40	MTJ/MR/J/MTV 65 MTJZ 65/80	MTJ/MR/J/MTV 80	MTJ/MR/J/MTV 110	MTJZ 110	MTJ ECO 40	CTV/CTJ 90	CTV/CTJ 110	CTV/CTJ 145	CTV/CTJ 200
+ 2x Activation block with fixing screws	43243	52022	43247	43256	47827	63702	49030	49032	49031	40652	40652
PNP NO Inductive switch only	40671										
2x + 2x PNP NO Ind. switch with mounting elements	40680		48026	43233	48047	63705	45105	49039	49038	48058	53054
PNP NC Inductive switch only	43570										
2x + 2x PNP NC Ind. switch with mounting elements	48851		40685	47848	47989	63704	45103	49037	49036	47850	53052
Extension Cable length 2m - Straight connector										8146	
Extension Cable length 5m - Straight connector										8147	
Extension Cable length 2m - Angeled connector										9017	
Extension Cable length 5m - Angeled connector										9019	