

## SPOJKE DN 11 TIP 74KB INOX COUPLINGS DN 11 TYPE 74KB INOX

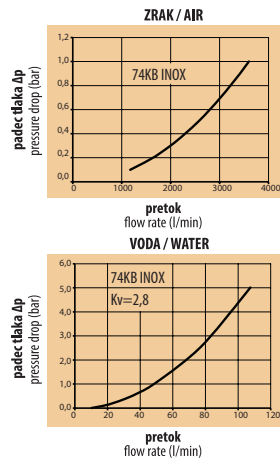


Delovni tlak  
Working pressure

PN=250 bar, maksimalni delovni statični  
pritisek z varnostnim faktorjem od 4 do 1  
PN=250 bar, maximum static working  
pressure with safety factor of 4 to 1

Delovna temperatura  
Working temperature

-15°C +200°C (FKM)  
0°C +316°C /FFKM)  
Odvisno od medija.  
Depending on the medium.



75% dejanske velikosti  
75% of actual size

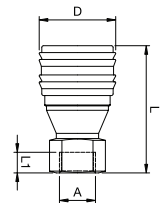
Spojka / Coupling	Standard / Standard (AISI 303)	Opcija / Option (AISI 316L)
Ohišje / Back body	AISI 303	AISI 316 L
Drsni obroč / Sleeve	AISI 303	AISI 316 L
Ventil / Valve	AISI 303	AISI 316 L
Vzmet in vskočni obroč / Spring and Locking ring	AISI 301	AISI 316 Ti
Zaporne kroglice / Locking balls	AISI 316	AISI 316
Tesnila / Seals	FKM	FKM
Ploščata vzmet / Spring plate	AISI 316 L	AISI 316 L

Vtikač / Plug	Standard / Standard (AISI303)	Opcija / Option (AISI 316L)
Vtikač / Plug profile	AISI 303	AISI 316 L
Ventil / Valve	AISI 303	AISI 316 L
Vzmet / Spring	AISI 301	AISI 316 Ti
Ploščata vzmet / Spring plate	AISI 316 L	AISI 316 L
Tesnilo / Seal	FKM	FKM

### SPOJKE / COUPLINGS

TIP-notranji navoj TYPE-female thread	A (mm)	Hex SW	Hex1 SW1	L (mm)	L1 (mm)	L2 (mm)	D (mm)	B (mm)	G (mm)
KD 1/2 I TIP 74KB SPOJKA AISI 303	G1/2	27		76	16		44.5		
KD 1/2 I TIP 74KB SPOJKA AISI 316L	G1/2	27		76	16		44.5		



### VTIKAČI / PLUGS

TIP-notranji navoj TYPE-female thread	A (mm)	Hex SW	Hex1 SW1	L (mm)	L1 (mm)	L2 (mm)	D (mm)	B (mm)	G (mm)
KS 1/2 I TIP 74SB VTIKAČ AISI 303	G1/2	27		48	16				
KS 1/2 I TIP 74SB VTIKAČ AISI 316L	G1/2	27		48	16				

