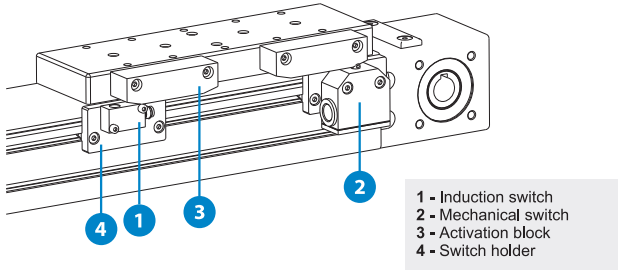
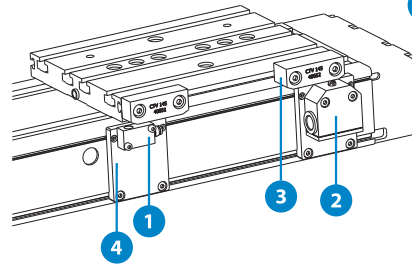


**MTJ / MRJ / MTV**



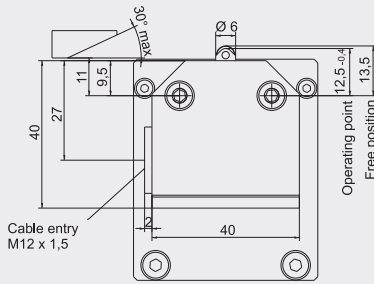
**CTV / CTJ**



**i** Mounting and using the Induction and Mechanical switch, can be done only if the CTV and CTJ series Linear Units are delivered with Connection plates.

**MS- Mechanical switch**

**TECHNICAL DATA**

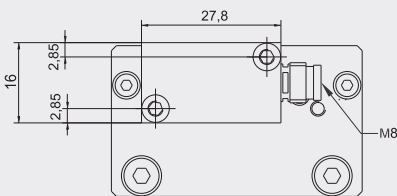


Protection class IEC 60529	IP 67
Ambient temperature	-5°C ...+80°C
Operating point accuracy	± 0.05 mm
Approach speed max.	45 m/min
Approach speed min.	0,01 m/min
Switching contact	1 changeover
Switching principle	Snap-action
Rated voltage	250 V AC
Switching current, min. at	10 mA
Switching voltage	24 V DC
Cable entry	M12 x 1,5

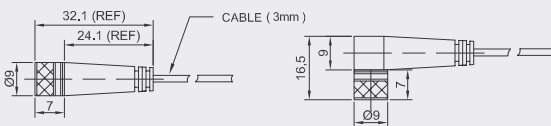
ORDERING CODES	MTJ/MR/J 40	MTJ/J 40	MTJ/MR/J/MTV 65 MTJ/J 65/80	MTJ/MR/J/MTV 80	MTJ/MR/J/MTV 110	MTJ/J 110	MTJ ECO 40	CTV/CTJ 90	CTV/CTJ 110	CTV/CTJ 145	CTV/CTJ 200
+ 2x  Activation block with fixing screws	43243	52022	43247	43256	47827	63702	49030	49032	49031	40652	40652
Mechanical switch only	47921										
2x  + 2x  + 2x  Mechanical switch with mounting elements	40683		40687	40689	47826	63703	49035	49034	49033	47939	53055

**IS- Inductive switch**

**TECHNICAL DATA**



**Extension cable with connector**



Sensor Type	PNP
Switching function	NC / NO
Rated voltage	10 ~ 30 V DC
Switching Current	150 mA max.
Ambient temperature	-25°C ...+70°C
Switching Frequency	800 Hz max.
Voltage Drop	3,5 V
Protection class	IP 67
Electrical connection	M8, 3-pin
Extension cable	Energy chain compliant - bending radius 75 mm
Cable material-length	PU
Cable length	2m / 5m
Cable length	M8, 3-pin Straight or Angeled connector

ORDERING CODES	MTJ/MR/J 40	MTJ/J 40	MTJ/MR/J/MTV 65 MTJ/J 65/80	MTJ/MR/J/MTV 80	MTJ/MR/J/MTV 110	MTJ/J 110	MTJ ECO 40	CTV/CTJ 90	CTV/CTJ 110	CTV/CTJ 145	CTV/CTJ 200
+ 2x  Activation block with fixing screws	43243	52022	43247	43256	47827	63702	49030	49032	49031	40652	40652
PNP NO Inductive switch only	40671										
2x  +  PNP NO Ind. switch with mounting elements	40680		48026	43233	48047	63705	45105	49039	49038	48058	53054
PNP NC Inductive switch only	43570										
2x  +  PNP NC Ind. switch with mounting elements	48851		40685	47848	47989	63704	45103	49037	49036	47850	53052
Extension Cable length 2m - Straight connector										8146	
Extension Cable length 5m - Straight connector										8147	
Extension Cable length 2m - Angeled connector										9017	
Extension Cable length 5m - Angeled connector										9019	