

## PNEVMATSKI CILINDRI / PNEUMATIC CYLINDERS

### CILINDER PCU, ECU / CYLINDER PCU, ECU

DIN ISO 6432

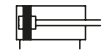
#### Tehnični podatki / Technical data

Medij / Fluid	filtriran, suh ali naoljen komprimiran zrak / filtered, dry or oiled compressed air
Delovni tlak / Working pressure	max. 10 bar
Temperatura / Temperature	0 °C ~ +80 °C

Material	
Pokrovi / End caps	Aluminij / Aluminium
Cev / Tube	X 5 Cr Ni 18 9
Batnica / Rod	X 20 Cr 13
Vodilna puša / Guide	bronz / bronze
Tesnila / Seals	PU-NBR



#### PCU-A



#### PCU-DDA



#### ECU



**i** Vsi PCU in ECU cilindri so opremljeni z magnetom na batu. Mazanje pri filtriranem in sušenem zraku ni potrebno! / All PCU and ECU cylinders are equipped with magnet on the piston. Lubricating is not necessary when filtered, dry air is used!

### PRIMER NAROČANJA / HOW TO ORDER

Tip cilindra / Type of cylinder

- PCU: ...dvostransko delujoč cilinder / double acting cilinder
- ECU: ...enostransko delujoč cilinder s povratno vzmetjo / single acting cilinder with return spring

Nazivni premer / Diameter

- PCU-A: ...8, 10, 12, 16, 20, 25
- PCU-DDA: ...16, 20, 25
- ECU: ...8, 10, 12, 16, 20, 25

Hod / Stroke

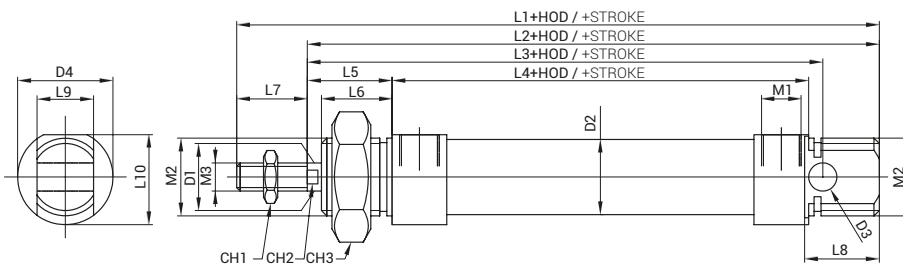
- ECU: ...max. 50 mm
- ECUZ: ...max. 30 mm

Izvedba / Feature

- DDA: ...obojestransko nastavljivo končno dušenje / both end adjustable cushioning
- A: ...PU obroči v končnih legah / PU rings at the end positions

Opcija / Option

- /: ...standard
- S2: ...skoznja batnica / through rod
- S6: ...tesnila za povišano temperaturo do 130° / seals for high temperature up to 130°



### NOSILEC SENZORJA / SENSOR HOLDER



SMBR - 8 -   
Ø CILINDRA / Ø OF CYLINDER

**i** Senzorji SMT65TP stran 46  
Sensors SMT65TP page 46

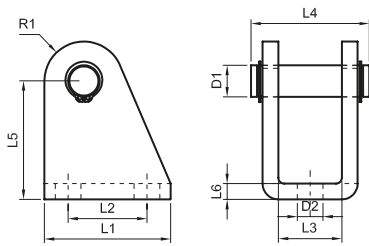
Ø	Teža / Weight [kg] (hod / stroke = 0 mm)	Teža / Weight [kg] vsakih / per every 10 mm
8	0,04	0,01
10	0,05	0,01
12	0,07	0,01
16	0,09	0,01
20	0,18	0,01
25	0,24	0,02

Tip in Ø cil / Type and Ø cyl	L1	L2	L3	L4	L5	L6	L7	L8	L9	L10	M1	M2	M3	ØD1	ØD2	ØD3	ØD4	CH1	CH2	CH3
PCU/ECU8A	86	74	64	46	16	12	12	12	8	15	M5	M12x1,25	M4x0,7	4	9,27	4	16	7	/	19
PCU/ECU10A	86	74	64	46	16	12	12	12	8	15	M5	M12x1,25	M4x0,7	4	11,27	4	16	7	/	19
PCU/ECU12A	104	88	75	48	22	18	16	18	12	18	M5	M16x1,5	M6x1	6	13,27	6	19	10	5	22
PCU/ECU16A*	109	93	82	53	22	18	16	18	12	18	M5	M16x1,5	M6x1	6	17,27	6	19	10	5	22
PCU/ECU20A*	131	111	95	67	24	20	20	20	16	25,5	G1/8	M22x1,5	M8x1,25	8	21,27	8	27	13	7	27
PCU/ECU25A*	140	118	104	68	28	22	22	22	16	28,5	G1/8	M22x1,5	M10x1,25	10	26,5	8	30	17	9	27
PCU16DDA	112	93	82	55	22	17	16	17	12	20	M5	M16x1,5	M6x1	6	17,27	6	21	10	5	22
PCU20DDA	131	111	95	67	24	20	20	20	16	25,5	G1/8	M22x1,5	M8x1,25	8	21,27	8	27	13	7	27
PCU25DDA	140	118	104	68	28	22	22	22	16	28,5	G1/8	M22x1,5	M10x1,25	10	26,5	8	30	17	9	27

\*PCU 16, 20 in 25A cilindri so na voljo tudi v INOX izvedbi. Pri naročilu se doda oznaka CR. / PCU 16, 20 in 25A cylinders are available in INOX version. At the end of order code add CR.

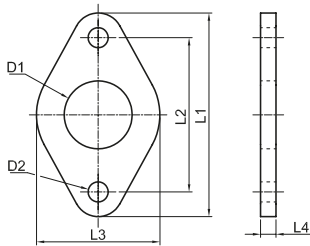
**PRITRDITVE ZA CILINDRE PCU, ECU / ACCESSORIES FOR CYLINDERS PCU, ECU**

**LBU** \*INOX



Ø	L1	L2	L3	L4	L5	L6	ØD1	R1	m [kg]
8	20	12,5	8,1	18	24	2,5	4	5	0,02
10	20	12,5	8,1	18	24	2,5	4	5	0,02
12	25	15	12,1	24	27	3	6	7	0,04
16*	25	15	12,1	24	27	3	6	7	0,04
20*	32	20	16,1	31	30	4	8	10	0,08
25*	32	20	16,1	31	30	4	8	10	0,08

**FBU** \*INOX

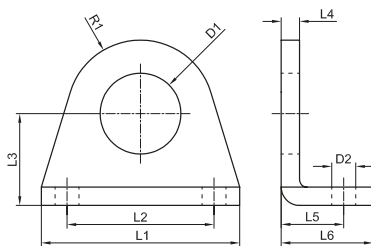


Ø	L1	L2	L3	L4	ØD1	ØD2	m [kg]
8	40	30	22	3	12	4,5	0,01
10	40	30	22	3	12	4,5	0,01
12	52	40	30	4	16	5,5	0,03
16*	52	40	30	4	16	5,5	0,03
20*	66	50	40	5	22	6,5	0,05
25*	66	50	40	5	22	6,5	0,05

**HBU** \*INOX

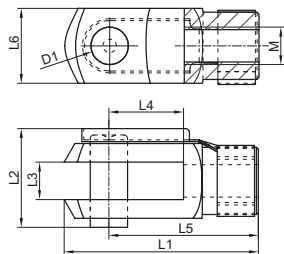


**i** Set vsebuje 2 kosa  
Set contains 2 pcs



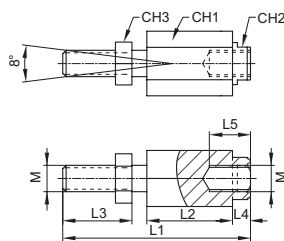
Ø	L1	L2	L3	L4	L5	L6	ØD1	ØD2	R1	m [kg]
8	35	25	16	3	11	16	12	4,5	10	0,02
10	35	25	16	3	11	16	12	4,5	10	0,02
12	42	32	20	4	14	20	16	5,5	12,5	0,04
16*	42	32	20	4	14	20	16	5,5	12,5	0,04
20*	54	40	25	5	17	25	22	6,6	20	0,09
25*	54	40	25	5	17	25	22	6,6	20	0,09

**SG** \*INOX



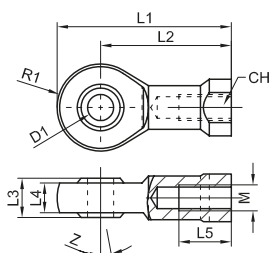
Tip Type	M	L1	L2	L3	L4	L5	L6	D1	m [kg]
SGM4	M4	21	11	4	8	16	8	4	0,01
SGM6*	M6	31	16	6	12	24	12	6	0,02
SGM8*	M8	42	21,5	8	16	32	16	8	0,05
SGM10x1,25*	M10x1,25	52	26	10	20	40	20	10	0,09

**FK**



Tip Type	M	L1	L2	L3	L4	L5	CH1	CH2	CH3	m [kg]
FKM4	M4	33	16,5	8	4,5	12,5	11	11	7	0,02
FKM6	M6	35	17,5	11	3,5	12,5	13	7	10	0,03
FKM8	M8	57	26	21	5	16	17	11	13	0,06
FKM10x1,25	M10x1,25	71,5	35	20	8	22	30	19	17	0,22

**SGS**



Tip Type	M	L1	L2	L3	L4	L5	ØD1	R1	CH	Z°	m
SGSM4	M4	36	27	8	6	10	5	9	9	13	0,02
SGSM6	M6	40	30	9	6,8	12	6	10	11	13	0,03
SGSM8	M8	48	36	12	9	16	8	12	14	13	0,05
SGSM10x1,25	M10x1,25	57	43	14	10,5	20	10	14	17	13	0,08

\*Označene pritrditve so na voljo tudi v INOX izvedbi. Pri naročilu se doda oznaka CR / Marked accessories are available in INOX version. At the end of order code add CR.