

Priključne plošče za YMV / Manifold blocks for YMV

YPM5 2 / 4 / 6 / 8 / 10 / 12 / 14



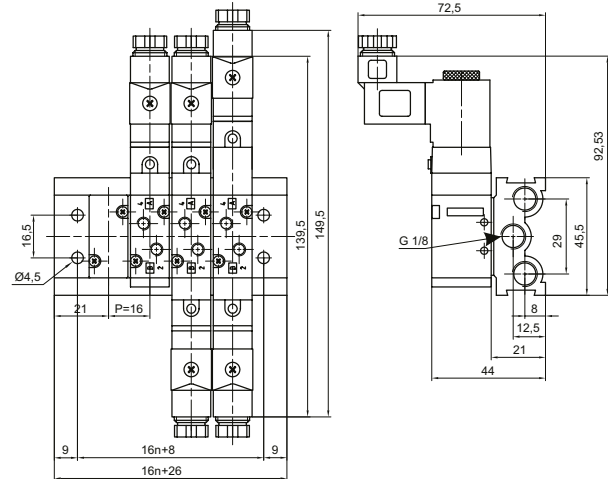
Priključna plošča za ventile YMV, YMM M5
Mainfold Block for YMV, YMMM5

Napajanje (navoj) / Air supply thread: G 1/8

YPPM5



Zaporna plošča za YPM5
Blanking Plate for YPM5



YP18 2 / 4 / 6 / 8 / 10 / 12 / 14



Priključna plošča za ventile YMV, YMM 1/8
Mainfold Block for YMV, YMM 1/8

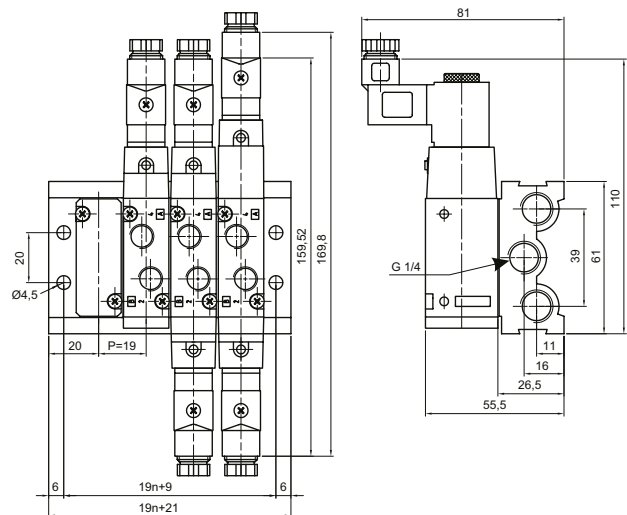
Napajanje (navoj) / Air supply thread: G 1/4

i Plošče YP18 so namenjene tudi sestavi multipol ventilskega otoka. Glej stran 86.
Manifold Block YP18 can be used in Multi Connector System. See page 86.

YPP18



Zaporna plošča za YP 1/8
Blanking Plate for YP 1/8



YP14 2 / 4 / 6 / 8 / 10 / 12 / 14



Priključna plošča za ventile YMV, YMM14
Mainfold Block for YMV, YMM14

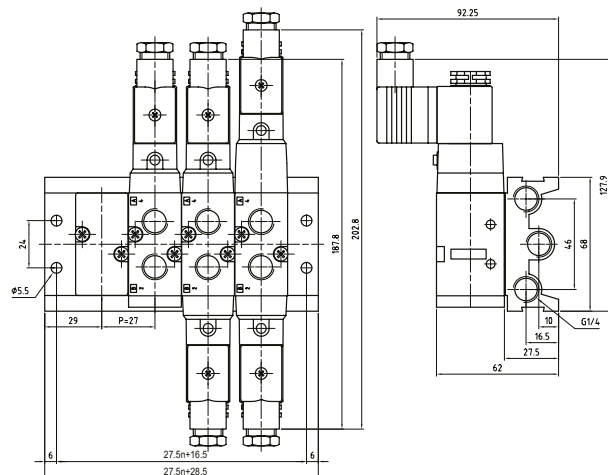
Napajanje (navoj) / Air supply thread: G 1/4

i Plošče YP14 so namenjene tudi sestavi multipol ventilskega otoka. Glej stran 86.
Manifold Block YP14 can be used in Multi Connector System. See page 86.

YPP14



Zaporna plošča za YP14
Blanking Plate for YP14



YP12 2 / 4 / 6 / 8 / 10 / 12 / 14



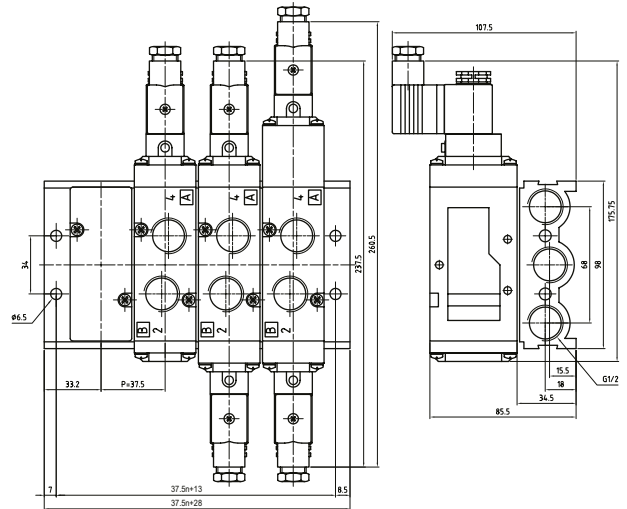
Priključna plošča za ventile YMV, YMM12
Mainfold Block for YMV, YMM12

Napajanje (navoj) / Air supply thread: G 1/2

YPP12



Zaporna plošča za YP12
Blanking Plate for YP12

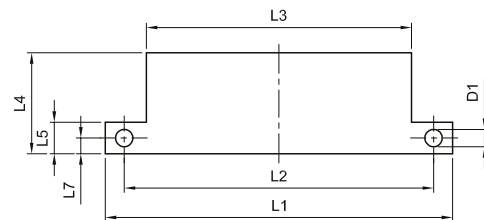
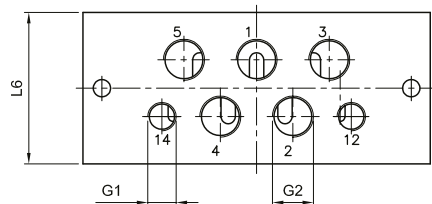


YPAUIS01, YPAUIS02



Priključna plošča za ventile YMV, YMM52 ISO1 in ISO2
Mainfold Block for YMV, YMM52 ISO1 and ISO2

Priključki na spodnji strani
Connections on the bottom side



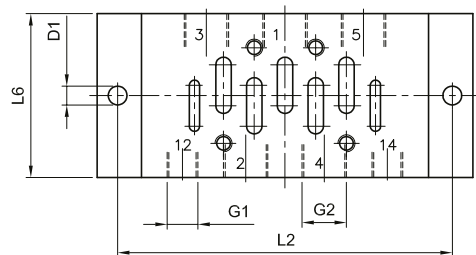
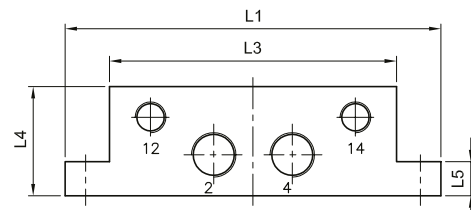
Tip Type	D1	G1	G2	L1	L2	L3	L4	L5	L6	L7
YPAUIS01	5,5	1/8	1/4	110	98	84	30	10	46	5
YPAUIS02	6,6	1/8	3/8	124	112	95	35	13	56	6,5

YPASIS01, YPASIS02



Priključna plošča za ventile YMV, YMM52 ISO1, ISO2
Mainfold Block for YMV, YMM52 ISO1, ISO2

Priključki na čelni strani
Connections on the forehead side



Tip Type	D1	G1	G2	L1	L2	L3	L4	L5	L6
YPASIS01	5,5	1/8	1/4	110	98	84	32	10	48
YPASIS02	6,6	1/8	3/8	124	112	95	40	13	57