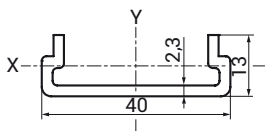
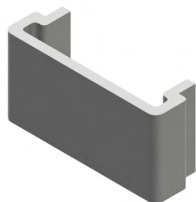


## KANALI ZA KABLE / CABLE DUCTS

### KANAL ZA KABEL 16x40 / CABLE DUCT 16x40

KODA NAROČANJA:  
 ORDER CODE: **K1640** \_\_ \_\_ / \_\_

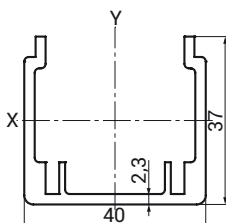
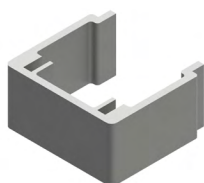


Konstrukcijski podatki  
 Construction specifications:  
 Material = Al Mg Si 0,5 F25  
 $m = 0,28 \text{ kg/m}$   
 $A = 1,04 \text{ cm}^2$   
 $I_x = 0,15 \text{ cm}^4$   
 $W_x = 0,16 \text{ cm}^3$   
 $I_y = 2,18 \text{ cm}^4$   
 $W_y = 1,09 \text{ cm}^3$



### KANAL ZA KABEL 40x40 / CABLE DUCT 40x40

KODA NAROČANJA:  
 ORDER CODE: **K4040** \_\_ \_\_ / \_\_

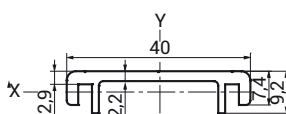


Konstrukcijski podatki  
 Construction specifications:  
 Material = Al Mg Si 0,5 F25  
 $m = 0,62 \text{ kg/m}$   
 $A = 2,28 \text{ cm}^2$   
 $I_x = 3,13 \text{ cm}^4$   
 $W_x = 1,24 \text{ cm}^3$   
 $I_y = 5,93 \text{ cm}^4$   
 $W_y = 2,97 \text{ cm}^3$



### POKROV KANALA 40 / CABLE DUCT COVER 40

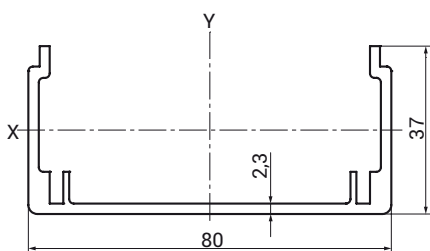
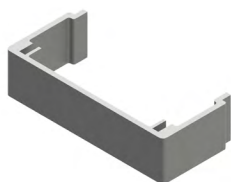
KODA NAROČANJA:  
 ORDER CODE: **PK40** \_\_ \_\_ / \_\_



Konstrukcijski podatki  
 Construction specifications:  
 Material = Al Mg Si 0,5 F25  
 $m = 0,31 \text{ kg/m}$   
 $A = 1,17 \text{ cm}^2$   
 $I_x = 0,08 \text{ cm}^4$   
 $W_x = 0,12 \text{ cm}^3$   
 $I_y = 2,01 \text{ cm}^4$   
 $W_y = 1,01 \text{ cm}^3$

### KANAL ZA KABEL 40x80 / CABLE DUCT 40x80

KODA NAROČANJA:  
 ORDER CODE: **K4080** \_\_ \_\_ / \_\_

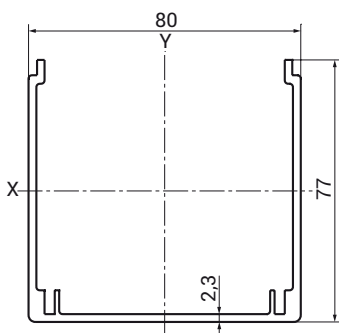
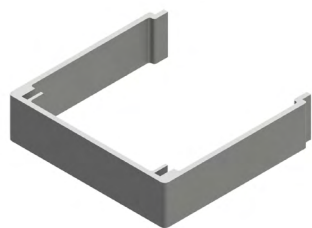


Konstrukcijski podatki  
 Construction specifications:  
 Material = Al Mg Si 0,5 F25  
 $m = 0,78 \text{ kg/m}$   
 $A = 2,87 \text{ cm}^2$   
 $I_x = 3,74 \text{ cm}^4$   
 $W_x = 1,36 \text{ cm}^3$   
 $I_y = 29,82 \text{ cm}^4$   
 $W_y = 7,46 \text{ cm}^3$



**KANAL ZA KABEL 80x80 / CABLE DUCT 80x80**

**KODA NAROČANJA:** **K8080** \_\_ / \_\_  
**ORDER CODE:**

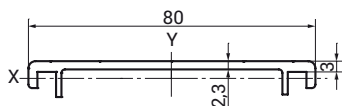


**Konstrukcijski podatki**  
 Construction specifications:  
 Material = Al Mg Si 0,5 F25  
 m = 1,66 kg/m  
 A = 6,14 cm<sup>2</sup>  
 I<sub>x</sub> = 37,60 cm<sup>4</sup>  
 W<sub>x</sub> = 7,17 cm<sup>3</sup>  
 I<sub>y</sub> = 70,95 cm<sup>4</sup>  
 W<sub>y</sub> = 17,74 cm<sup>3</sup>



**POKROV KANALA 80 / CABLE DUCT COVER 80**

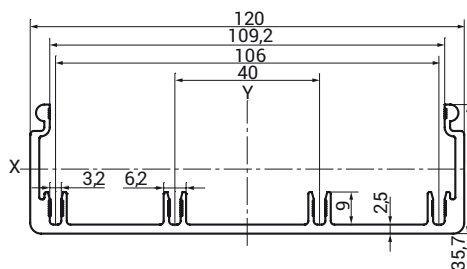
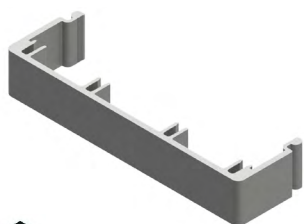
**KODA NAROČANJA:** **PK80** \_\_ / \_\_  
**ORDER CODE:**



**Konstrukcijski podatki**  
 Construction specifications:  
 Material = Al Mg Si 0,5 F25  
 m = 0,64 kg/m  
 A = 2,37 cm<sup>2</sup>  
 I<sub>x</sub> = 0,10 cm<sup>4</sup>  
 W<sub>x</sub> = 0,14 cm<sup>3</sup>  
 I<sub>y</sub> = 14,91 cm<sup>4</sup>  
 W<sub>y</sub> = 3,73 cm<sup>3</sup>

**KANAL ZA KABEL 40x120 / CABLE DUCT 40x120**

**KODA NAROČANJA:** **K40120** \_\_ / \_\_  
**ORDER CODE:**

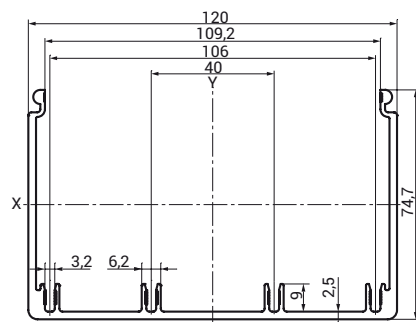
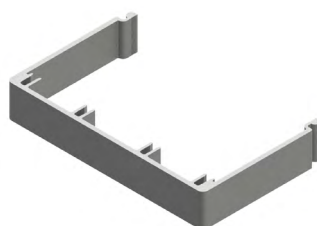


**Konstrukcijski podatki**  
 Construction specifications:  
 Material = Al Mg Si 0,5 F25  
 m = 1,60 kg/m  
 A = 5,91 cm<sup>2</sup>  
 I<sub>x</sub> = 5,43 cm<sup>4</sup>  
 W<sub>x</sub> = 2,72 cm<sup>3</sup>  
 I<sub>y</sub> = 115,69 cm<sup>4</sup>  
 W<sub>y</sub> = 19,28 cm<sup>3</sup>



**KANAL ZA KABEL 80x120 / CABLE DUCT 80x120**

**KODA NAROČANJA:** **K80120** \_\_ / \_\_  
**ORDER CODE:**

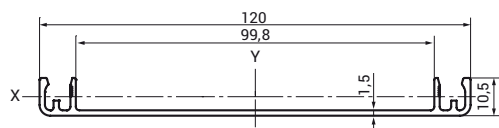
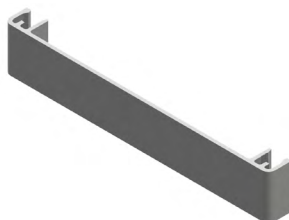


**Konstrukcijski podatki**  
 Construction specifications:  
 Material = Al Mg Si 0,5 F25  
 m = 2,12 kg/m  
 A = 7,83 cm<sup>2</sup>  
 I<sub>x</sub> = 42,56 cm<sup>4</sup>  
 W<sub>x</sub> = 10,64 cm<sup>3</sup>  
 I<sub>y</sub> = 182,32 cm<sup>4</sup>  
 W<sub>y</sub> = 30,39 cm<sup>3</sup>



**POKROV KANALA 120 / CABLE DUCT COVER 120**

**KODA NAROČANJA:** **PK120** \_\_ / \_\_  
**ORDER CODE:**



**Konstrukcijski podatki**  
 Construction specifications:  
 Material = Al Mg Si 0,5 F25  
 m = 0,66 kg/m  
 A = 2,42 cm<sup>2</sup>  
 I<sub>x</sub> = 40,69 cm<sup>4</sup>  
 W<sub>x</sub> = 6,78 cm<sup>3</sup>  
 I<sub>y</sub> = 0,16 cm<sup>4</sup>  
 W<sub>y</sub> = 0,10 cm<sup>3</sup>